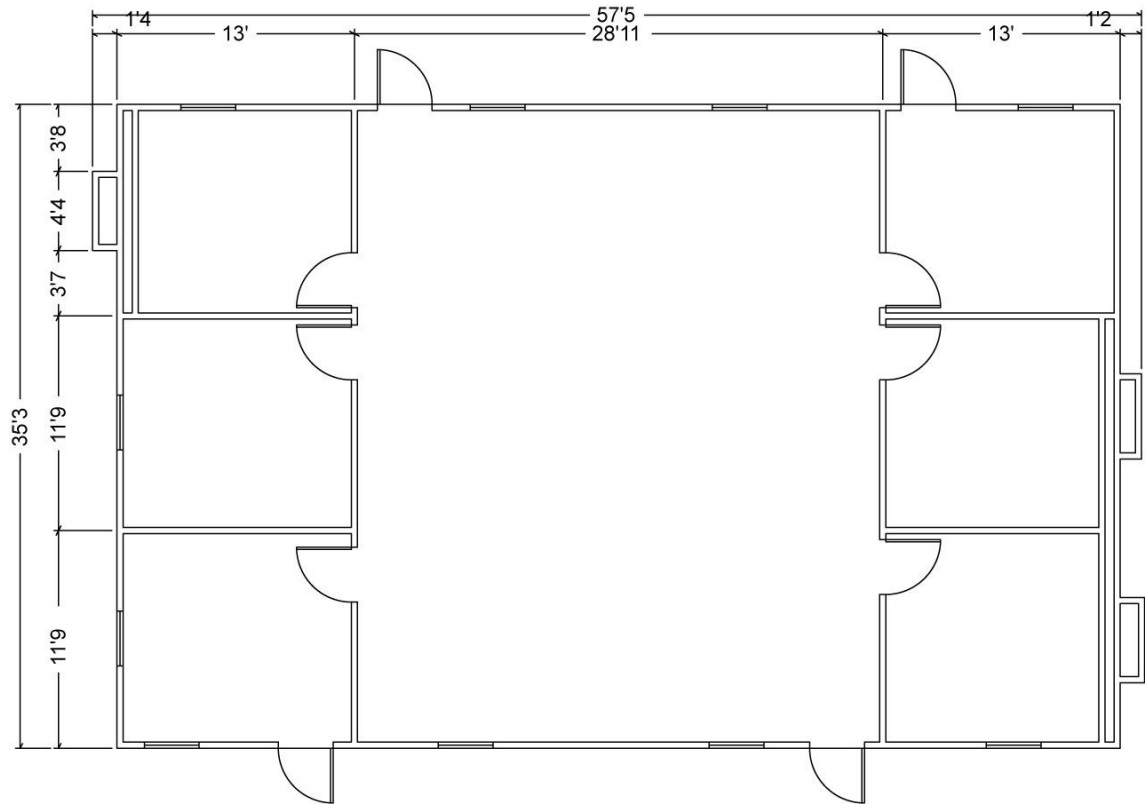
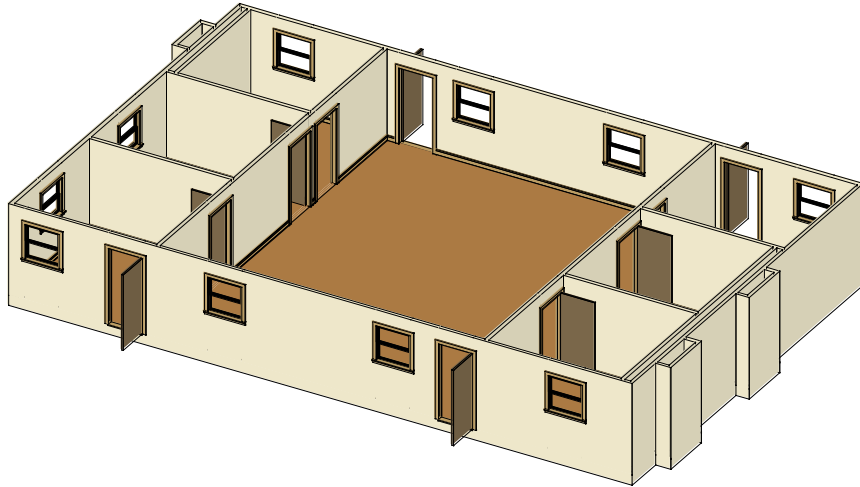




3-Plex FAST Modular Building



FAST Building Specifications:

- 1/8" commercial block tile flooring
- 1/2" VCG wall covering
- .045 mil EDPM rubber transverse roof
- (3) 15 KW 240/208 HVAC
- (3) 3-ton (36,000 BTU) cooling
- Plenum walls
- (6) 120/240 volt single-phase, 3 wire 60hz
- Vertical sliding windows with insect screens & double insulated glass
- 5/8" Duratemp exterior wood siding

Floor plans are not drawn to scale. There may be slight variations in floor plans, furnishings, and dimensions. Please call to confirm availability.